

Avaa sivu

<https://www.microsoft.com/en-us/download/details.aspx?id=43351>

Paina Download.

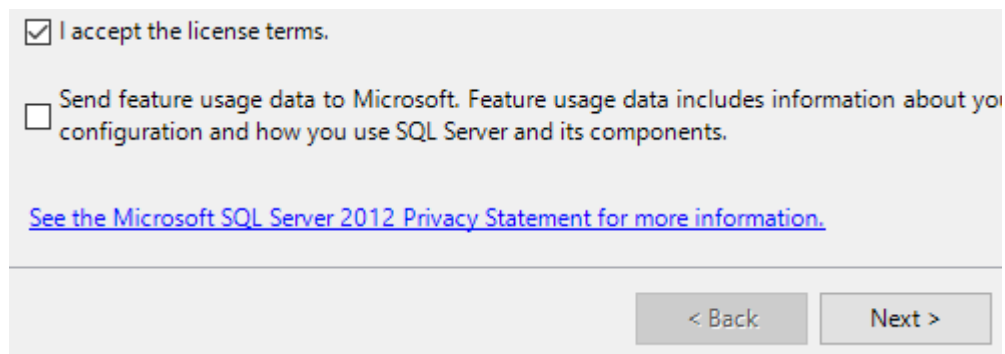
Aseta valinta SQLEXP_x64_ENU.exe-nimisen tiedoston eteen ja paina Next.

Lataa tiedosto ja suorita se.

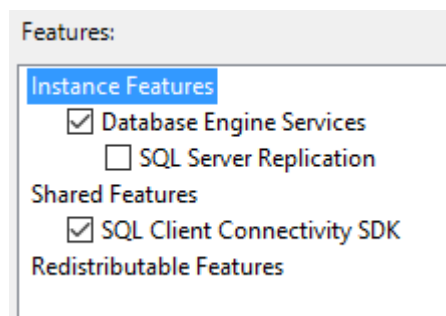
Valitse New SQL...



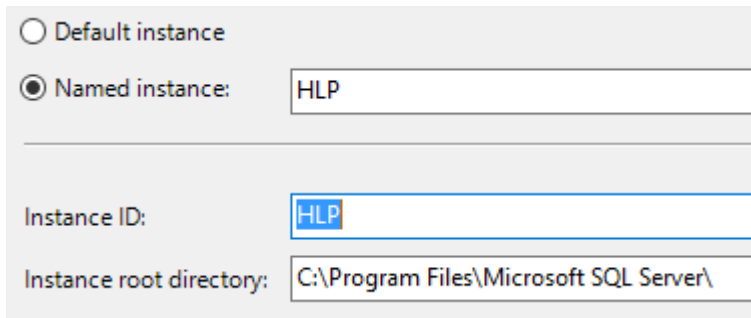
Hyväksy lisenssiehdot ja paina Next.



Ota valinta pois khdasta SQL Server Replication. Paina Next.



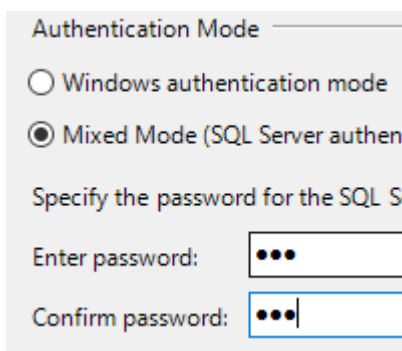
Kirjoita kohtaan Named instance ja Instance ID teksti HLP. Paina Next



The screenshot shows a configuration window for a named instance. It has two radio buttons: 'Default instance' (unselected) and 'Named instance:' (selected). The 'Named instance:' field contains the text 'HLP'. Below this, there is a section for 'Instance ID:' with a text box containing 'HLP'. At the bottom, the 'Instance root directory:' is set to 'C:\Program Files\Microsoft SQL Server\'.

Paina Specify the service accounts-ikkunassa Next.

Valitse Mixed Mode. Kirjoita Enter password ja Confirm password-kohtiin teksti hlp12345H



The screenshot shows the 'Authentication Mode' section of the setup wizard. It has two radio buttons: 'Windows authentication mode' (unselected) and 'Mixed Mode (SQL Server authentication and Windows authentication)' (selected). Below this, there is a section titled 'Specify the password for the SQL Server service accounts'. It contains two text boxes: 'Enter password:' and 'Confirm password:'. Both boxes contain three dots, indicating that the password 'hlp12345H' has been entered and is being confirmed.

Paina Error reporting-ikkunassa Next.